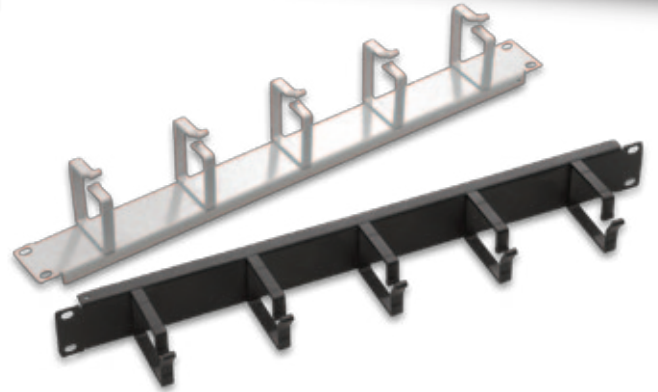
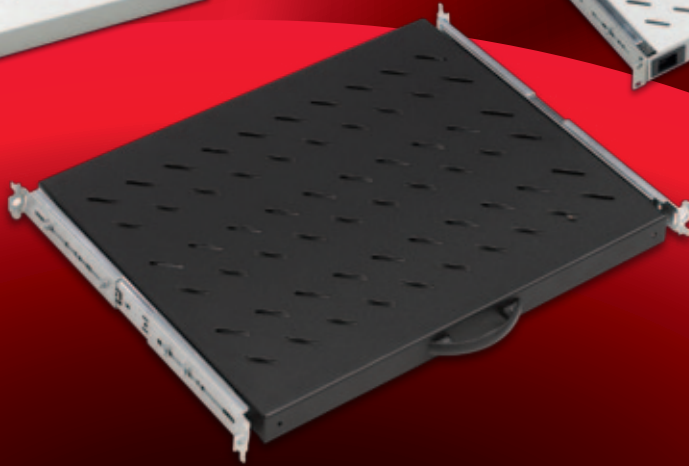
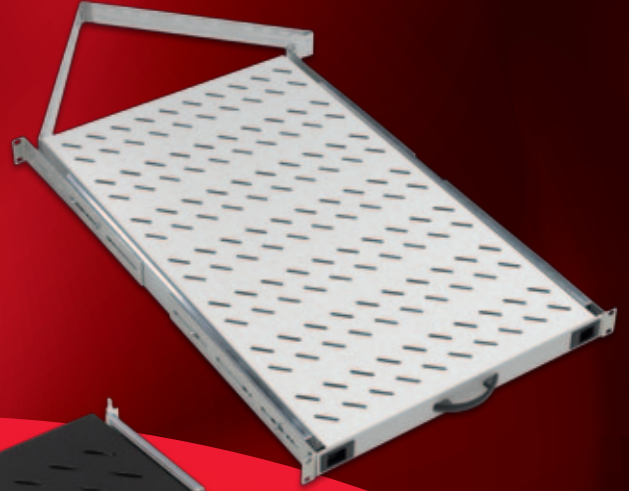
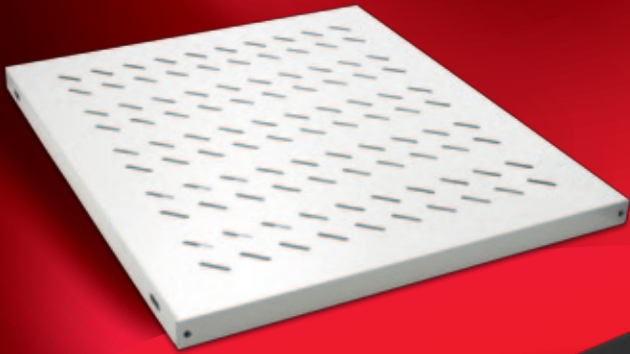
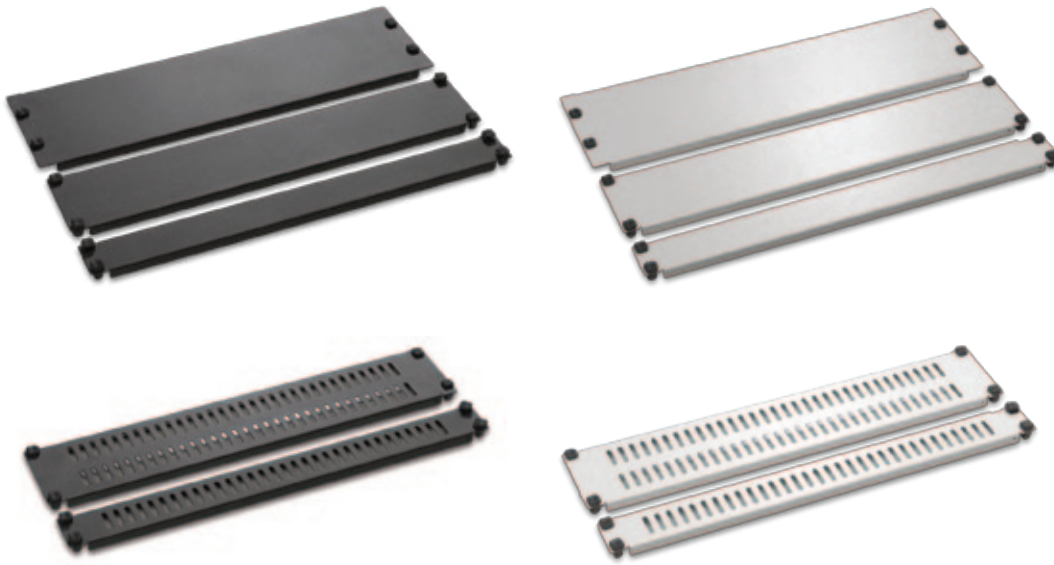


# ACCESSORIES





For Empty or Spare U locations in Network and Storage applications, the products could be used for closing and giving a good visual performance to cabinet. In Hot or cold air flow applications, the blanking panels could be used for directing the cold or hot air through. Sizes are various between 1U to 6U in 19" width size. Solid metal toolless model, with special turning clips by hand toolless application can be performed. From Steel Material with 2 bends extra strength given. Supply in RAL 9005 Black and RAL 7035 Light Grey colors. 1U and 2U sizes have the slotted models, providing the ventilation possibility.

TOOLLESS TYPE BLANK PANELS	Logistics Data						COMPATIBLE WITH																						
							DYNAMIC Series Free Standing Cabinets W (Width) x D (Depth) mm		DYNAMIC Series Free Standing Server Cabinets W (Width) x D (Depth) mm		NETbox Series Wall Mounting Cabinets W (Width) x D (Depth) mm		19" NETbox Series SOHO Cabinets W (Width) x D (Depth) mm		10" NETbox Series SOHO Cabinets W (Width) x D (Depth) mm		19" NETbox Home Series Cabinets W (Width) x D (Depth) mm		NETbox Slim Series Cabinets W (Width) x D (Depth) mm		DYNA Frame Systems W 530x D (Depth) mm								
Part Number* and Product Description	Product Dimensions mm	Pack Dimensions mm	Product Net Weight kg	Product Gross Weight kg	QTY in Box pcs	Box Dimensions mm	Box Gross Weight kg	600x600	600x800	600x1000	800x600	800x800	800x1000	600x1000	800x1000	600x450	600x600	600x450+150	540x300	540x400	312x300	600x150	600x300	522x480	Single Frame with 80mm depth	Double Frame System with 80mm depth	Double Frame System with 80mm depth	Double Frame System with 107mm depth	Single Frame with 160mm depth
LN-PNL-TBP-1U19-CC 1U 19" Blank Panel Toolless	482x15x44	500x22x55	0,25	0,29	40	560x425x122	13,5	●	●	●	●	●	●	●	●	●	●	●	●	●	●	●	●	●	●	●	●	●	●
LN-PNL-TBP-2U19-CC 2U 19" Blank Panel Toolless	482x15x88	500x22x147	0,41	0,5	36	560x428x122	19	●	●	●	●	●	●	●	●	●	●	●	●	●	●	●	●	●	●	●	●	●	●
LN-PNL-TBP-3U19-CC 3U 19" Blank Panel Toolless	482x15x132	500x22x147	0,57	0,66	40	545x425x400	28,7	●	●	●	●	●	●	●	●	●	●	●	●	●	●	●	●	●	●	●	●	●	●
LN-PNL-TBP-4U19-CC 4U 19" Blank Panel Toolless	482x15x176	490x22x182	0,78	0,9	40	545x425x400	39,2	●	●	●	●	●	●	●	●	●	●	●	●	●	●	●	●	●	●	●	●	●	●
LN-PNL-TBP-5U19-CC 5U 19" Blank Panel Toolless	482x15x220	490x22x225	0,95	1,06	40	550x430x480	44,1	●	●	●	●	●	●	●	●	●	●	●	●	●	●	●	●	●	●	●	●	●	●
LN-PNL-TBP-6U19-CC 6U 19" Blank Panel Toolless	482x15x264	490x22x270	1,13	1,27	42	550x450x630	55,7	●	●	●	●	●	●	●	●	●	●	●	●	●	●	●	●	●	●	●	●	●	●
LN-PNL-TPP-1U19-CC 1U 19" Blank Panel Toolless vented	482x15x44	500x22x55	0,22	0,26	40	560x425x122	13	●	●	●	●	●	●	●	●	●	●	●	●	●	●	●	●	●	●	●	●	●	●
LN-PNL-TPP-2U19-CC 2U 19" Blank Panel Toolless vented	482x15x88	500x22x147	0,38	0,46	21	560x428x122	12	●	●	●	●	●	●	●	●	●	●	●	●	●	●	●	●	●	●	●	●	●	●

\* CC= Color Code, LG Light Grey RAL 7035, BL Black RAL 9005, customers to define while ordering.



For Empty or Spare U locations in Network and Storage applications, the products could be used for closing and giving a good visual performance to cabinet. In Hot or cold air flow applications, the blanking panels could be used for directing the cold or hot air through. Sizes are various between 1U to 6U in 19" width size. Solid metal Screw model conventional type. From Steel Material with 2 bends extra strength given. Supply in RAL 9005 Black and RAL 7035 Light Grey colors. 1U and 2U sizes have the slotted models, providing the ventilation possibility.

SCREW TYPE BLANK PANELS	Logistics Data						COMPATIBLE WITH																						
							DYNAMIC Series Free Standing Cabinets W (Width) x D (Depth) mm		DYNAMIC Series Free Standing Server Cabinets W (Width) x D (Depth) mm		NETbox Series Wall Mounting Cabinets W (Width) x D (Depth) mm		19" NETbox Series SOHO Cabinets W (Width) x D (Depth) mm		10" NETbox Series SOHO Cabinets W (Width) x D (Depth) mm		19" NETbox Home Series Cabinets W (Width) x D (Depth) mm		NETbox Slim Series Cabinets W (Width) x D (Depth) mm		DYNA Frame Systems W 530 x D (Depth) mm								
Part Number* and Product Description	Product Dimensions mm	Pack Dimensions mm	Product Net Weight kg	Product Gross Weight kg	QTY in Box pcs	Box Dimensions mm	Box Gross Weight kg	600x600	600x800	600x1000	800x600	800x800	800x1000	600x1000	800x1000	600x450	600x600	600x450+150	540x300	540x400	312x300	600x150	600x300	522x480	Single Frame with 80mm depth	Double Frame System with 80mm depth	Double Frame System with 80mm depth	Double Frame System with 107mm depth	Single Frame with 160mm depth
LN-PNL-KPN-1U19-CC 1U 19" Blank Panel Screw type	482x12x44	500x22x55	0,26	0,3	40	560x425x122	13,9	●	●	●	●	●	●	●	●	●	●	●	●	●	●	●	●	●	●	●	●	●	●
LN-PNL-KPN-2U19-CC 2U 19" Blank Panel Screw type	482x12x88	500x22x147	0,46	0,51	36	560x425x122	20	●	●	●	●	●	●	●	●	●	●	●	●	●	●	●	●	●	●	●	●	●	●
LN-PNL-KPN-3U19-CC 3U 19" Blank Panel Screw type	482x12x132	500x22x147	0,58	0,67	40	545x425x400	29,1	●	●	●	●	●	●	●	●	●	●	●	●	●	●	●	●	●	●	●	●	●	●
LN-PNL-KPN-4U19-CC 4U 19" Blank Panel Screw type	482x12x176	490x22x182	0,79	0,91	40	545x425x400	39,6	●	●	●	●	●	●	●	●	●	●	●	●	●	●	●	●	●	●	●	●	●	●
LN-PNL-KPN-5U19-CC 5U 19" Blank Panel Screw type	482x12x220	490x22x225	0,97	1,08	40	550x430x480	44,9	●	●	●	●	●	●	●	●	●	●	●	●	●	●	●	●	●	●	●	●	●	●
LN-PNL-KPN-6U19-CC 6U 19" Blank Panel Screw type	482x12x264	490x22x270	1,15	1,29	42	550x450x630	56,5	●	●	●	●	●	●	●	●	●	●	●	●	●	●	●	●	●	●	●	●	●	●
LN-PNL-PPK-1U19-CC 1U 19" Blank Panel vented Screw type	482x12x44	500x22x55	0,23	0,27	40	560x425x122	13,4	●	●	●	●	●	●	●	●	●	●	●	●	●	●	●	●	●	●	●	●	●	●
LN-PNL-PPK-2U19-CC 2U 19" Blank Panel vented Screw type	482x12x88	500x22x147	0,39	0,47	21	560x425x122	12,2	●	●	●	●	●	●	●	●	●	●	●	●	●	●	●	●	●	●	●	●	●	●

\* CC= Color Code, LG Light Grey RAL 7035, BL Black RAL 9005, customers to define while ordering.