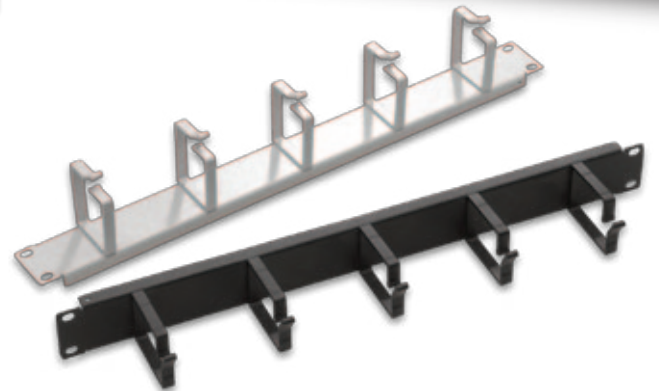
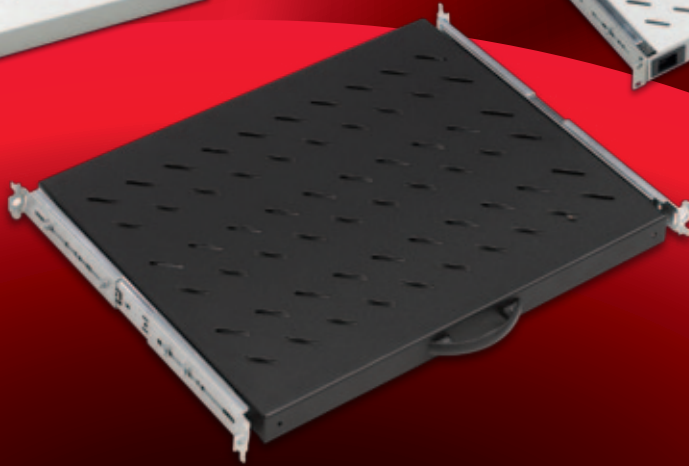
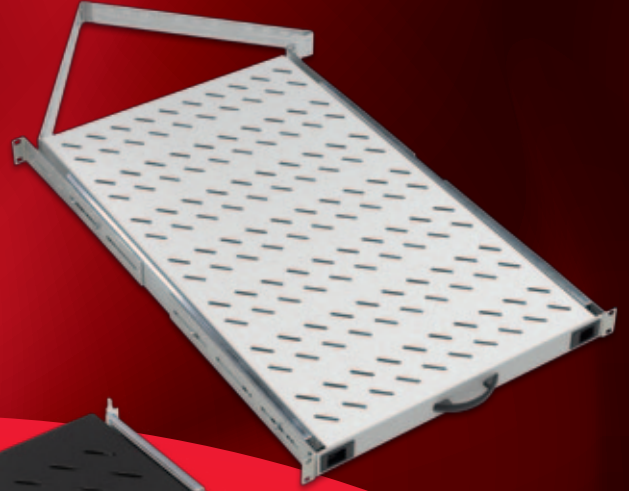
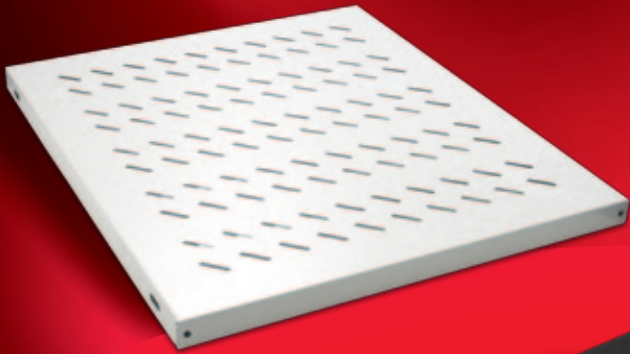


ACCESSORIES



ACCESSORIES

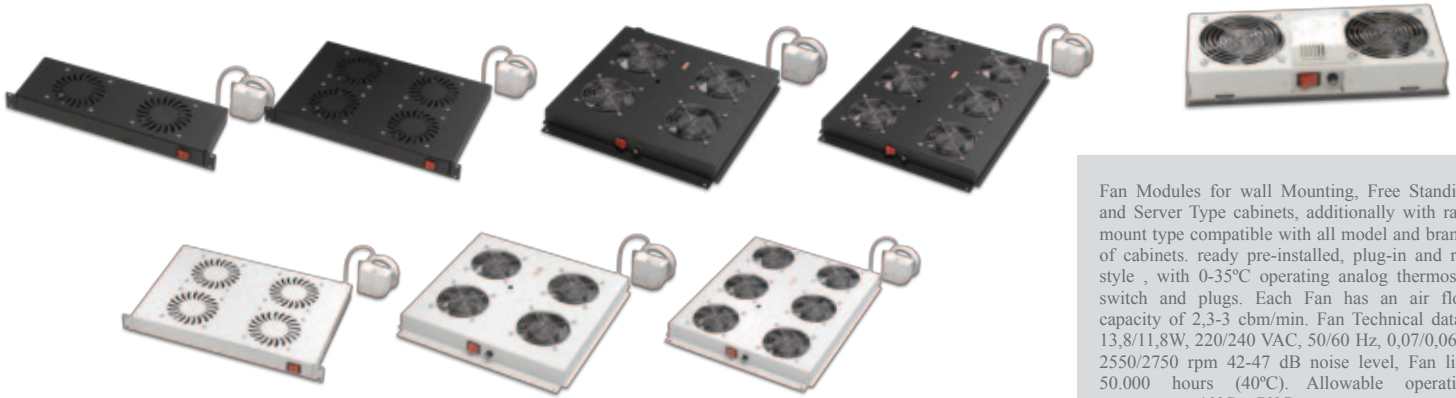
FAN MODULES with ON/OFF SWITCH



Fan Modules for wall Mounting, Free Standing and Server Type cabinets, additionally with rack mount type compatible with all model and brands of cabinets. ready pre-installed, plug-in and run style , with on/off switches and plugs. Each Fan has an air flow capacity of 2,3-3 cbm/min. Fan Technical data : 13,8/11,8W, 220/240 VAC, 50/60 Hz, 0,07/0,06A, 2550/2750 rpm 42-47 dB noise level, Fan life: 50.000 hours (40°C). Allowable operating temperature -10°C ~ +70°C.

| FAN MODULES with ON/OFF SWITCH | Logistics Data | | | | | | COMPATIBLE WITH | | | | | | | | | | | | | | | | | | | | | | | | | | | |
|---|-----------------------|--------------------|-----------------------|-------------------------|----------------|-------------------|---------------------|---------|---|----------|---|---------|--|----------|--|---------|--|-------------|--|---------|---|---------|---------|---------|------------------------------|-------------------------------------|--------------------------------------|--------------------------------------|--|--|--|--|--|--|
| | | | | | | | COMPTIBLE WITH | | DYNAMax Series Free Standing Server Cabinets W (Width) x D (Depth) mm | | NETbox Series Wall Mounting Cabinets W (Width) x D (Depth) mm | | 19" NETbox Series SOHO Cabinets W (Width) x D (Depth) mm | | 10" NETbox Series SOHO Cabinets W (Width) x D (Depth) mm | | 19" NETbox Home Series Cabinets W (Width) x D (Depth) mm | | NETbox Slim Series Cabinets W (Width) x D (Depth) mm | | DYNFrame Frame Systems W 530 x D (Depth) mm | | | | | | | | | | | | | |
| Part Number* and Product Description | Product Dimensions mm | Pack Dimensions mm | Product Net Weight kg | Product Gross Weight kg | QTY in Box pcs | Box Dimensions mm | Box Gross Weight kg | 600x600 | 600x800 | 600x1000 | 800x600 | 800x800 | 800x1000 | 600x1000 | 800x1000 | 600x450 | 600x600 | 600x450+150 | 540x300 | 540x400 | 312x300 | 600x150 | 600x300 | 522x480 | Single Frame with 80mm depth | Double Frame System with 80mm depth | Double Frame System with 107mm depth | Double Frame System with 160mm depth | | | | | | |
| LN-FAN-ONF-1FWM-CC 1 Fan Module on/off switched Wall Mounting Type | 346x145x50 | 380x160x60 | 1,33 | 1,56 | 15 | 545x425x400 | 25,2 | | | | | | | | | ● | ● | ● | ● | ● | | | | | | | | | | | | | | |
| LN-FAN-ONF-2FWM-CC 2 Fan Module on/off switched Wall Mounting Type | 346x145x50 | 380x160x60 | 1,77 | 2 | 15 | 545x425x400 | 32,9 | | | | | | | | | ● | ● | ● | ● | ● | | | | | | | | | | | | | | |
| LN-FAN-ONF-1FFS-CC 1 Fan Module on/off switched Free Standing Type | 415x431x44 | 460x430x65 | 2,48 | 2,65 | 6 | 545x425x400 | 18 | ● | ● | ● | ● | ● | ● | | | | | | | | | | | | | | | | | | | | | |
| LN-FAN-ONF-2FFS-CC 2 Fan Module on/off switched Free Standing Type | 415x431x44 | 460x430x65 | 2,83 | 3,13 | 6 | 545x425x400 | 20,8 | ● | ● | ● | ● | ● | ● | | | | | | | | | | | | | | | | | | | | | |
| LN-FAN-ONF-4FFS-CC 4 Fan Module on/off switched Free Standing Type | 415x431x44 | 460x430x65 | 3,9 | 4,15 | 6 | 545x425x400 | 26,9 | ● | ● | ● | ● | ● | ● | | | | | | | | | | | | | | | | | | | | | |
| LN-FAN-ONF-4FSR-CC 4 Fan Module on/off switched Free Standing Server Type | 415x532x44 | 440x570x65 | 4,9 | 5,35 | 8 | 550x450x630 | 44 | | | | | | | | | ● | ● | | | | | | | | | | | | | | | | | |
| LN-FAN-ONF-6FSR-CC 6 Fan Module on/off switched Free Standing Server Type | 415x532x44 | 440x570x65 | 6,3 | 6,70 | 8 | 550x450x630 | 55 | | | | | | | | | ● | ● | | | | | | | | | | | | | | | | | |
| LN-FAN-ONF-2FRM-CC 2 Fan Module on/off switched rack mount 19" compatible | 482x150x44 | 460x430x65 | 2,6 | 2,95 | 8 | 550x430x450 | 25 | ● | ● | ● | ● | ● | ● | ● | ● | ● | ● | ● | ● | ● | | | | | | | | | | | | | | |
| LN-FAN-ONF-4FRM-CC 4 Fan Module on/off switched rack mount 19" compatible | 482x300x44 | 460x430x65 | 4,95 | 5,30 | 8 | 550x430x450 | 44 | ● | ● | ● | ● | ● | ● | ● | ● | ● | ● | ● | ● | ● | | | | | | | | | | | | | | |

* CC= Color Code, LG Light Grey RAL 7035, BL Black RAL 9005, customers to define while ordering



Fan Modules for wall Mounting, Free Standing and Server Type cabinets, additionally with rack mount type compatible with all model and brands of cabinets. ready pre-installed, plug-in and run style , with 0-35°C operating analog thermostat switch and plugs. Each Fan has an air flow capacity of 2,3-3 cbm/min. Fan Technical data : 13,8/11,8W, 220/240 VAC, 50/60 Hz, 0,07/0,06A, 2550/2750 rpm 42-47 dB noise level, Fan life: 50.000 hours (40°C). Allowable operating temperature -10°C~+70°C.

| FAN MODULES with ANALOG THERMOSTAT | Logistics Data | | | | | | COMPATIBLE WITH | | | | | | | | | | | | | | | | | | | | | | |
|---|-----------------------|--------------------|-----------------------|-------------------------|----------------|-------------------|---------------------|---------|---|----------|---------|--|----------|----------|--|---------|--|-------------|--|---------|--|---------|--|---------|---|-------------------------------------|-------------------------------------|--------------------------------------|--|
| | | | | | | | COMPATIBLE WITH | | DYNAmic Series Free Standing Cabinets W (Width) x D (Depth) mm | | | DYNAmix Series Free Standing Server Cabinets W (Width) x D (Depth) mm | | | NETbox Series Wall Mounting Cabinets W (Width) x D (Depth) mm | | 19" NETox Series SOHO Cabinets W (Width) x D (Depth) mm | | 10" NETox Series SOHO Cabinets W (Width) x D (Depth) mm | | 19" NETox Home Series Cabinets W (Width) x D (Depth) mm | | NETox Slim Series Cabinets W (Width) x D (Depth) mm | | DYNAmix Frame Systems W 530 x D (Depth) mm | | | | |
| Part Number* and Product Description | Product Dimensions mm | Pack Dimensions mm | Product Net Weight kg | Product Gross Weight kg | QTY in Box pcs | Box Dimensions mm | Box Gross Weight kg | 600x600 | 600x800 | 600x1000 | 800x600 | 800x800 | 800x1000 | 600x1000 | 800x1000 | 600x450 | 600x600 | 600x450+150 | 540x300 | 540x400 | 312x300 | 600x150 | 600x300 | 522x480 | Single Frame with 80mm depth | Double Frame System with 80mm depth | Double Frame System with 80mm depth | Double Frame System with 160mm depth | |
| LN-FAN-THM-1FWM-CC 1 Fan Module thermostat switched Wall Mounting Type | 346x175x50 | 380x160x60 | 1,53 | 1,76 | 15 | 545x425x400 | 28,2 | | | | | | | | | ● | ● | ● | ● | ● | | | | | | | | | |
| LN-FAN-THM-2FWM-CC 2 Fan Module thermostat switched Wall Mounting Type | 346x175x50 | 380x160x60 | 1,97 | 2,2 | 15 | 545x425x400 | 34,9 | | | | | | | | | ● | ● | ● | ● | ● | | | | | | | | | |
| LN-FAN-THM-1FFS-CC 1 Fan Module thermostat switched Free Standing Type | 415x431x44 | 460x430x65 | 2,68 | 2,85 | 6 | 545x425x400 | 19,2 | ● | ● | ● | ● | ● | ● | | | | | | | | | | | | | | | | |
| LN-FAN-THM-2FFS-CC 2 Fan Module thermostat switched Free Standing Type | 415x431x44 | 460x430x65 | 3,08 | 3,33 | 6 | 545x425x400 | 22 | ● | ● | ● | ● | ● | ● | | | | | | | | | | | | | | | | |
| LN-FAN-THM-4FFS-CC 4 Fan Module thermostat switched Free Standing Type | 415x431x44 | 460x430x65 | 4,1 | 4,35 | 6 | 545x425x400 | 28,1 | ● | ● | ● | ● | ● | ● | | | | | | | | | | | | | | | | |
| LN-FAN-THM-4FSR-CC 4 Fan Module thermostat switched Free Standing Server Type | 415x532x44 | 440x570x65 | 5,1 | 5,55 | 7 | 545x425x610 | 42,9 | | | | | | | ● | ● | | | | | | | | | | | | | | |
| LN-FAN-THM-6FSR-CC 6 Fan Module thermostat switched Free Standing Server Type | 415x532x44 | 440x570x65 | 6,5 | 6,9 | 7 | 545x425x610 | 50,5 | | | | | | | ● | ● | | | | | | | | | | | | | | |
| LN-FAN-THM-2FRM-CC 2 Fan Module thermostat switched rack mount 19" compatible | 482x150x44 | 460x430x65 | 2,8 | 3,15 | 9 | 550x430x450 | 29,3 | ● | ● | ● | ● | ● | ● | ● | ● | ● | ● | ● | ● | ● | ● | | | | | | | | |
| LN-FAN-THM-4FRM-CC 4 Fan Module thermostat switched rack mount 19" compatible | 482x300x44 | 460x430x65 | 5,15 | 5,5 | 7 | 550x430x450 | 39,5 | ● | ● | ● | ● | ● | ● | ● | ● | ● | ● | ● | ● | ● | ● | | | | | | | | |

* CC= Color Code, LG Light Grey RAL 7035, BL Black RAL 9005, customers to define while ordering



Fan Modules for wall Mounting, Free Standing and Server Type cabinets, additionally with rack mount type compatible with all model and brands of cabinets. ready pre-installed, plug-in and run style, with 0-35°C operating digital thermostat switch and plugs. Each Fan has an air flow capacity of 2,3-3 cbm/min. Fan Technical data : 13,8/11,8W, 220/240 VAC, 50/60 Hz, 0,07/0,06A, 2550/2750 rpm 42-47 dB noise level, Fan life: 50.000 hours (40°C). Allowable operating temperature -10°C~+70°C.

| FAN MODULES with DIGITAL THERMOSTAT | | Logistics Data | | | | | | COMPATIBLE WITH | | | | | | | | | | | | | | | | | | | | | | | |
|---|-----------------------|--------------------|-----------------------|-------------------------|----------------|-------------------|---------------------|---|---------|---|---------|--|----------|---|----------|---|---------|---|---------|---|---------|---|---------|---------|------------------------------------|---|---|--|-------------------------------------|--|--|
| | | | | | | | | DYNAmic Series Free Standing Cabinets W (Width) x D (Depth) mm | | DYNAmx Series Free Standing Server Cabinets W (Width) x D (Depth) mm | | NETbox Series Wall Mounting Cabinets W (Width) x D (Depth) mm | | 19" NETbox Series SOHO Cabinets W (Width) x D (Depth) mm | | 10" NETbox Series SOHO Cabinets W (Width) x D (Depth) mm | | 19" NETbox Home Series Cabinets W (Width) x D (Depth) mm | | NETbox Slim Series Cabinets W (Width) x D (Depth) mm | | DYNAmic Frame Systems W 530 x D (Depth) mm | | | | | | | | | |
| Part Number* and Product Description | Product Dimensions mm | Pack Dimensions mm | Product Net Weight kg | Product Gross Weight kg | QTY in Box pcs | Box Dimensions mm | Box Gross Weight kg | 600x600 | 600x800 | 600x1000 | 800x600 | 800x800 | 800x1000 | 600x1000 | 800x1000 | 600x450 | 600x600 | 600x450+150 | 540x300 | 540x400 | 312x300 | 600x150 | 600x300 | 522x480 | Single Frame with 80mm depth Frame | Double Frame System with 80mm depth Frame D:670mm | Double Frame System with 80mm depth Frame D:870mm | Double Frame System with 80mm depth Frame D:1070mm | Single Frame with 160mm depth Frame | | |
| LN-FAN-THD-2FFS-CC 2 Fan Module digital thermostat switched Free Standing Type | 415x431x44 | 460x430x65 | 3,7 | 3,95 | 5 | 545x425x400 | 21,8 | ● | ● | ● | ● | ● | ● | | | | | | | | | | | | | | | | | | |
| LN-FAN-THD-4FFS-CC 4 Fan Module digital thermostat switched Free Standing Type | 415x431x44 | 460x430x65 | 4,8 | 5,2 | 5 | 550x430x450 | 27,9 | ● | ● | ● | ● | ● | ● | | | | | | | | | | | | | | | | | | |
| LN-FAN-THD-4FSR-CC 4 Fan Module digital thermostat switched Free Standing Type | 415x532x44 | 440x570x65 | 5,8 | 6,3 | 5 | 550x430x450 | 32,5 | | | | | | | ● | ● | | | | | | | | | | | | | | | | |
| LN-FAN-THD-6FSR-CC 6 Fan Module digital thermostat switched Free Standing Server Type | 415x532x44 | 440x570x65 | 7,2 | 7,6 | 7 | 550x450x630 | 55 | | | | | | | ● | ● | | | | | | | | | | | | | | | | |
| LN-FAN-THD-2FRM-CC 2 Fan Module digital thermostat switched Free Standing Server Type | 482x150x44 | 460x430x65 | 3,5 | 4,1 | 7 | 550x430x450 | 29,7 | ● | ● | ● | ● | ● | ● | ● | ● | | | | | | | | | | | | | | | | |
| LN-FAN-THD-4FRM-CC 4 Fan Module digital thermostat switched rack mount 19" compatible | 482x300x44 | 460x430x65 | 5,8 | 6,1 | 6 | 550x430x450 | 37,7 | ● | ● | ● | ● | ● | ● | ● | ● | | | | | | | | | | | | | | | | |

* CC= Color Code, LG Light Grey RAL 7035, BL Black RAL 9005, customers to define while ordering