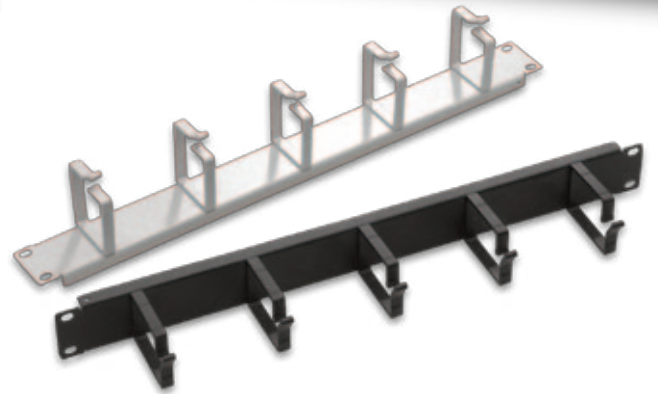
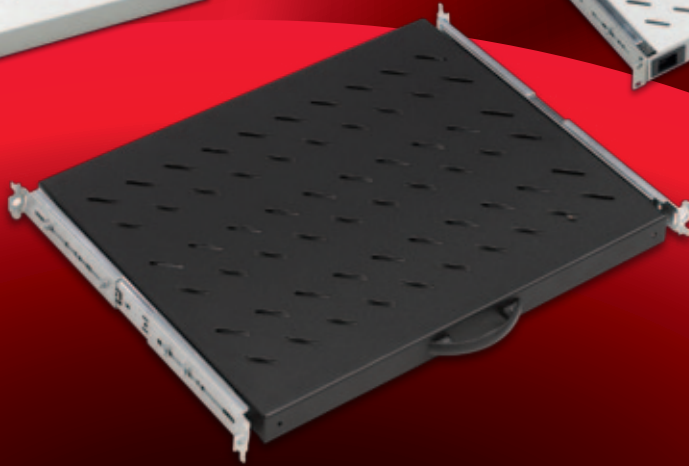
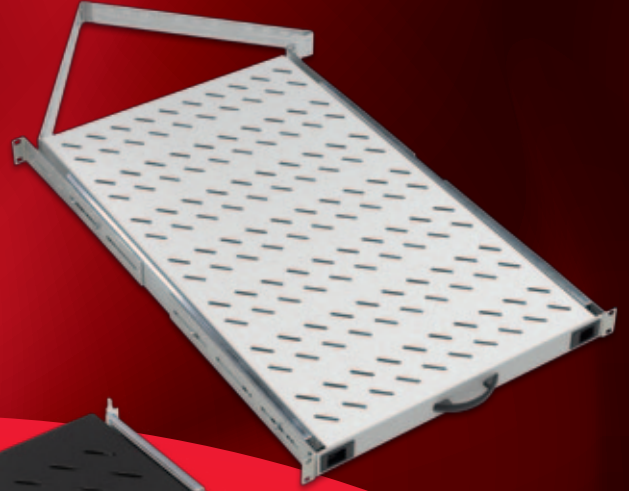
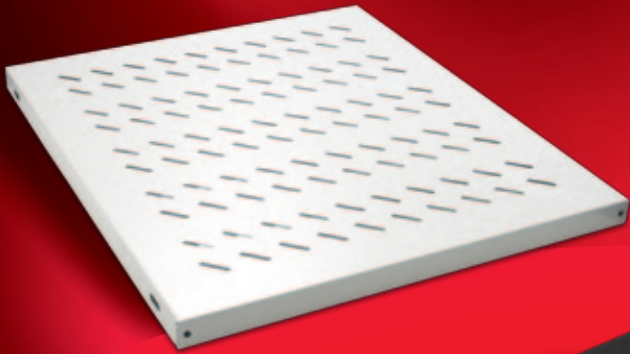
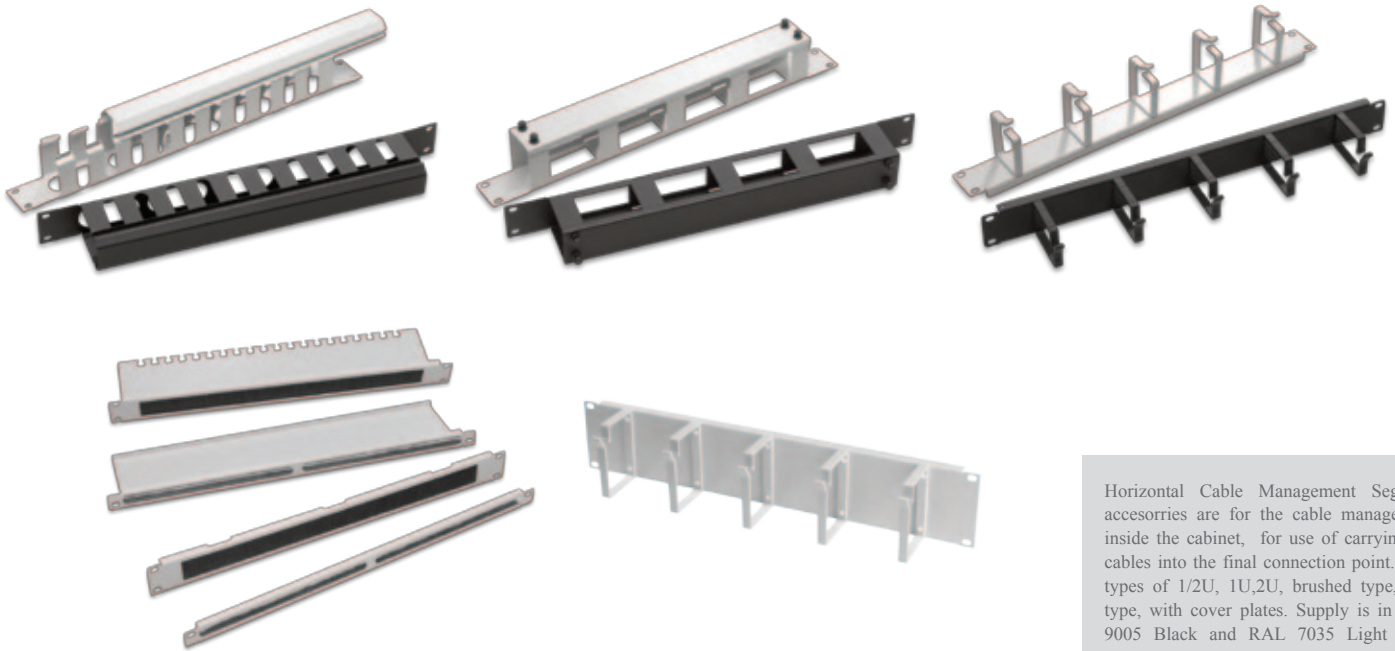


# ACCESSORIES





Horizontal Cable Management Segment accessories are for the cable management inside the cabinet, for use of carrying the cables into the final connection point. have types of 1/2U, 1U,2U, brushed type, ring type, with cover plates. Supply is in RAL 9005 Black and RAL 7035 Light Grey colors.

HORIZONTAL CABLE MANAGEMENT ACCESSORIES	Logistics Data					COMPATIBLE WITH																								
						DYNAmic Series Free Standing Cabinets W (Width) x D (Depth) mm	DYNAmic Series Free Standing Server Cabinets W (Width) x D (Depth) mm	NE.Box Series Wall Mounting Cabinets W (Width) x D (Depth) mm	19" NE.Box Series SOHO Cabinets W (Width) x D (Depth) mm	10" NE.Box Series SOHO Cabinets W (Width) x D (Depth) mm	19" NE.Box Home Series Cabinets W (Width) x D (Depth) mm	NE.Box Slim Series Cabinets W (Width) x D (Depth) mm	DYNAmic Frame Systems W 530 x D (Depth) mm		DYNAmic Frame Systems W 530 x D (Depth) mm		DYNAmic Frame Systems W 530 x D (Depth) mm		DYNAmic Frame Systems W 530 x D (Depth) mm											
Part Number* and Product Description	Product Dimensions mm	Pack Dimensions mm	Product Net Weight kg	Product Gross Weight kg	QTY in Box pcs	Box Dimensions mm	Box Gross Weight kg	600x600	600x800	600x1000	800x600	800x800	800x1000	600x1000	800x1000	600x450	600x600	600x450+150	540x300	540x400	312x300	600x150	600x300	522x480	Single Frame with 80mm depth Frame	Double Frame System with 80mm depth Frame D:670mm	Double Frame System with 80mm depth Frame D:870mm	Double Frame System with 80mm depth Frame D:1070mm	Single Frame with 160mm depth Frame	
<b>LN-KDG-YKD-IUKN-CC</b> 1U 19" cable management panel 5 rings	482x72x44	490x80x50	0,32	0,35	32	545x425x400	12,85	●	●	●	●	●	●	●	●	●	●	●	●	●	●	●	●	●	●	●	●	●	●	●
<b>LN-KDG-YKD-IUKT-CC</b> 1U 19" cable management panel, channel type, removable front cover plate with clips	482x75x44	490x80x50	0,51	0,55	32	545x425x400	19,20	●	●	●	●	●	●	●	●	●	●	●	●	●	●	●	●	●	●	●	●	●	●	●
<b>LN-KDG-YKD-IUKZ-CC</b> 1U 19" cable management panel, channel type, removable insert type sliding cover plate	482x72x44	490x80x50	0,68	0,72	32	545x425x400	24,10	●	●	●	●	●	●	●	●	●	●	●	●	●	●	●	●	●	●	●	●	●	●	●
<b>LN-KDG-YKD-IUFC-CC</b> 1U 19" cable management panel for patchcord entry, brushed type	482x12x44	490x20x50	0,25	0,29	40	560x425x122	13,50	●	●	●	●	●	●	●	●	●	●	●	●	●	●	●	●	●	●	●	●	●	●	●
<b>LN-KDG-YKD-IUFO-CC</b> 1U 19" cable management panel for patchcord entry, brushed type, with L rear bend patchcord holder and tire up panel	482x112x44	490x135x50	0,58	0,76	20	545x425x400	17,00	●	●	●	●	●	●	●	●	●	●	●	●	●	●	●	●	●	●	●	●	●	●	●
<b>LN-KDG-YKD-05FC-CC</b> 1/2U 19" cable management panel for patchcord entry, brushed stripe around the patchcord entry	482x12x22	490x135x50	0,45	0,64	20	545x425x400	14,00	●	●	●	●	●	●	●	●	●	●	●	●	●	●	●	●	●	●	●	●	●	●	●
<b>LN-KDG-YKD-2UKN-CC</b> 2U 19" cable management panel 5 rings	482x72x88	490x85x95	0,65	0,72	16	545x425x400	13,00	●	●	●	●	●	●	●	●	●	●	●	●	●	●	●	●	●	●	●	●	●	●	●

\* CC= Color Code, LG Light Grey RAL 7035, BL Black RAL 9005, customers to define while ordering.



Horizontal Cable Management Segment accessories are for the cable management inside the cabinet, for use of carrying the cables into the final connection point. Have types of 1/2U, 1U,2U, brushed type, ring type, with cover plates. Supply is in RAL 9005 Black and RAL 7035 Light Grey colors.

HORIZONTAL CABLE MANAGEMENT ACCESSORIES	Logistics Data						COMPATIBLE WITH																						
							DYNAmic Series Free Standing Cabinets W (Width) x D (Depth) mm		DYNAmic Series Free Standing Server Cabinets W (Width) x D (Depth) mm		NE.Box Series Wall Mounting Cabinets W (Width) x D (Depth) mm		19" NE.Box Series SOHO Cabinets W (Width) x D (Depth) mm		19" NE.Box Home Series Cabinets W (Width) x D (Depth) mm		NE.Box Slim Series Cabinets W (Width) x D (Depth) mm		DYNAmic Frame Systems W 530 x D (Depth) mm										
Part Number* and Product Description	Product Dimensions mm	Pack Dimensions mm	Product Net Weight kg	Product Gross Weight kg	QTY in Box pcs	Box Dimensions mm	Box Gross Weight kg	600x600	600x800	600x1000	800x600	800x800	800x1000	600x1000	800x1000	600x450	600x600	600x450+150	540x300	540x400	312x300	600x150	600x300	522x480	Single Frame with 80mm depth Frame	Double Frame System with 80mm depth Frame D:670mm	Double Frame System with 80mm depth Frame D:870mm	Double Frame System with 80mm depth Frame D:1070mm	Single Frame with 160mm depth Frame
<b>LN-KDG-YKD-2UKA-CC</b> 2U 19" cable management panel, channel type, removable angled front cover plate, front cover plate is toolless	482x75x88	490x85x95	1,03	1,12	16	545x425x400	20,00	●	●	●	●	●	●	●	●	●	●	●	●	●	●	●	●	●	●	●	●	●	●
<b>LN-KDG-YKD-2UKZ-CC</b> 2U 19" cable management panel, channel type removable insert type sliding cover plate	482x72x88	490x85x95	1,35	1,47	16	545x425x400	25,50	●	●	●	●	●	●	●	●	●	●	●	●	●	●	●	●	●	●	●	●	●	●
<b>LN-KDG-YKD-2UFT-CC</b> 2U 19" cable management panel, channel type, Finger Style PVC organizer integrated, up/down opening toolless front cover plate 2U	482x165x88	500x180x95	1,54	1,75	8	545x425x400	16,00	●	●	●	●	●	●	●	●	●	●	●	●	●	●	●	●	●	●	●	●	●	●
<b>LN-KDG-KKM-4460-CC</b> Cable Management ring : Metal 44x60mm. 1set=5 pcs.	44x60	145x100x50	0,65	0,80	26	560x425x122	22,00	●	●	●	●	●	●	●	●	●	●	●	●	●	●	●	●	●	●	●	●	●	●
<b>LN-KDG-KTR-D600-CC</b> 1U Cable Tireup rail 19" and D600mm compatible	282x10x44	290x20x50	0,25	0,33	1	290x20x50	0,33	●	●	●	●	●	●	●	●	●	●	●	●	●	●	●	●	●	●	●	●	●	●
<b>LN-KDG-KTR-D800-CC</b> 1U Cable Tireup rail, for D800mm. Cabinets	482x10x44	490x20x50	0,33	0,43	1	490x20x50	0,43	●	●	●	●	●	●	●	●	●	●	●	●	●	●	●	●	●	●	●	●	●	●
<b>LN-KDG-KTR-D100-CC</b> 1U Cable Tireup rail, for D1000mm. Cabinets	686x10x44	700x20x50	0,41	0,52	1	700x20x50	0,52	●	●	●	●	●	●	●	●	●	●	●	●	●	●	●	●	●	●	●	●	●	●

\* CC= Color Code, LG Light Grey RAL 7035, BL Black RAL 9005, customers to define while ordering.