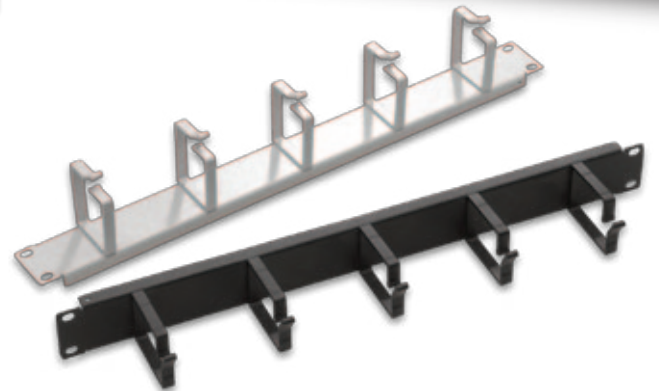
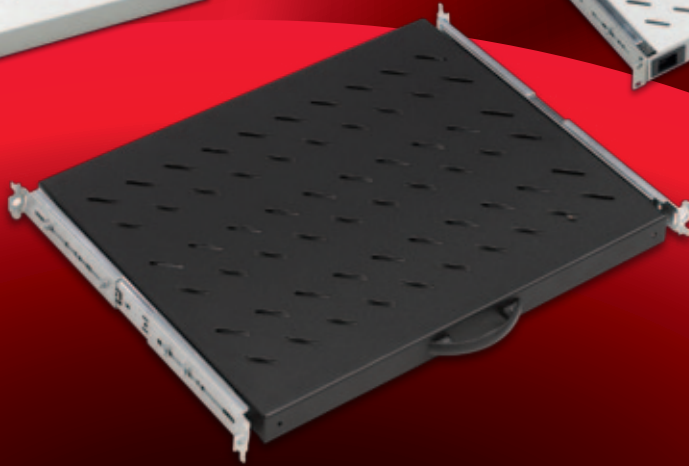
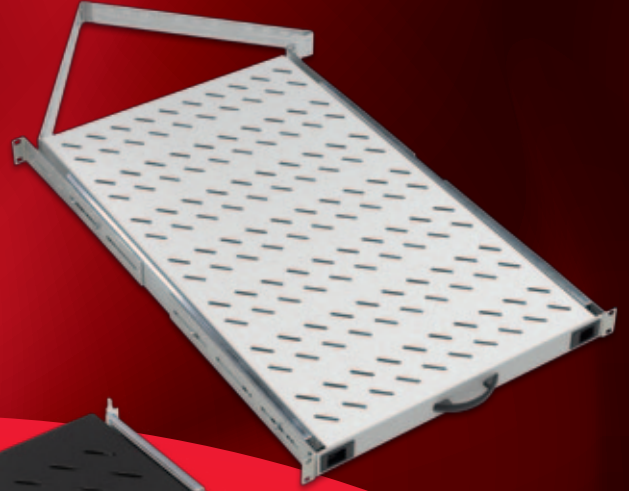
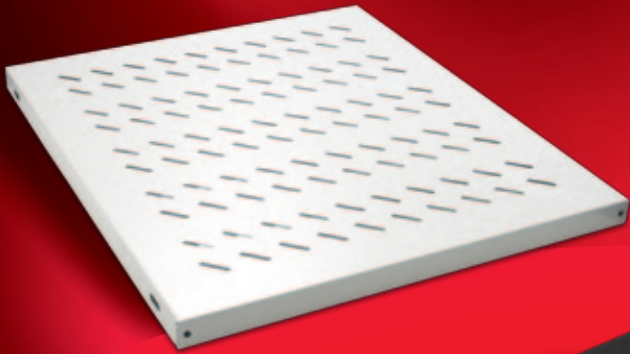
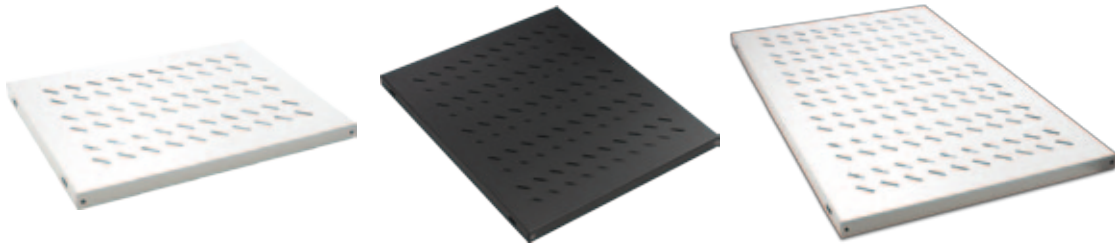


ACCESSORIES

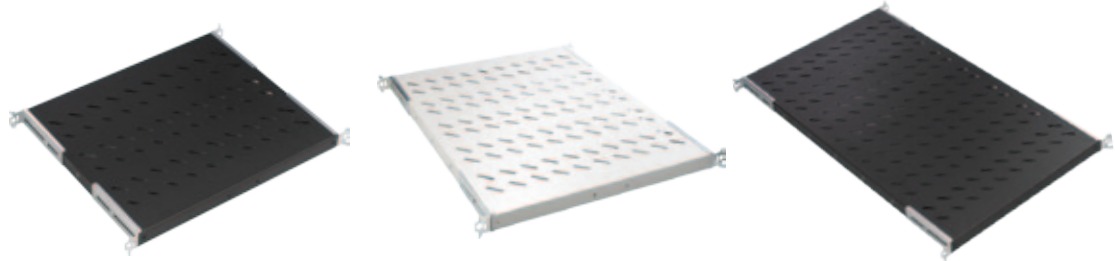




Fixed Shelves, 4 point fixing, Compatible with Lande cabinet. For allowing the convection of heated air inside cabinets, the shelves are structured with ventilation slots. Supply is in RAL 9005 Black and RAL 7035 Light Grey colors. From Steel Material, with high technology bending strengthening accessory, Load capacity 50 kg.

FIXED SHELVES 4 POINT FIXING	Logistics Data						COMPATIBLE WITH																						
							DYNAMIC Series Free Standing Cabinets W (Width) x D (Depth) mm		DYNAMax Series Free Standing Server Cabinets W (Width) x D (Depth) mm		NETBox Series Wall Mounting Cabinets W (Width) x D (Depth) mm		19" NETBox Series SOHO Cabinets W (Width) x D (Depth) mm		10" NETBox Series SOHO Cabinets W (Width) x D (Depth) mm		19" NETBox Home Series Cabinets W (Width) x D (Depth) mm		NETBox Slim Series Cabinets W (Width) x D (Depth) mm		DYNAlFrame Frame Systems W 530 x D (Depth) mm								
Part Number* and Product Description	Product Dimensions mm	Pack Dimensions mm	Product Net Weight kg	Product Gross Weight kg	QTY in Box pcs	Box Dimensions mm	Box Gross Weight kg	600x600	600x800	600x1000	800x600	800x800	800x1000	600x1000	800x1000	600x450	600x600	600x450+150	540x300	540x400	312x300	600x150	600x300	522x480	Single Frame with 80mm depth	Double Frame System with 80mm depth	Double Frame System with 160mm depth	Single Frame with 160mm depth	
LN-RAF-SBT-D600-CC Fixed Shelf, 4 point fixing, Physical Shelf Depth:370mm for D=600mm cabinets, Load Capacity 50 kg	486x370x30	510x380x35	1,8	2	12	550x430x480	25,5	●			●							**											
LN-RAF-SBT-D800-CC Fixed Shelf, 4 point fixing, Physical Shelf Depth:570mm for D=800mm cabinets, Load Capacity 50 kg	486x570x30	500x590x35	2,5	3	12	550x450x630	38		●			●																	
LN-RAF-SBT-D100-CC Fixed Shelf, 4 point fixing, Physical Shelf Depth:770mm for D=1000mm cabinets, Load Capacity 50 kg	486x770x30	500x795x37	3,5	3,9	10	550x440x800	42		●			●	●	●															

* CC= Color Code, LG Light Grey RAL 7035, BL Black RAL 9005, customers to define while ordering. ** Please order set of 19" equipment mounting rails.



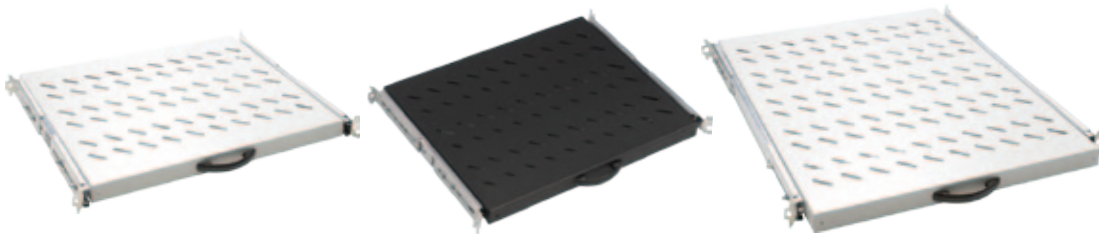
Fixed Shelves, 4 point fixing, Compatible with all brand cabinets Multivendor. Adjustable brackets at depth. For allowing the convection of heated air inside cabinets, the shelves are structured with ventilation slots. Supply is in RAL 9005 Black and RAL 7035 Light Grey colors. From Steel Material, with high technology bending strengthening accessory, Load capacity 50 kg.

FIXED SHELVES, 4 POINT FIXING _ UNIVERSAL MODEL, MULTIVENDOR, compatible with any brand cabinet	Logistics Data						COMPATIBLE WITH																						
							DYNAMIC Series Free Standing Cabinets W (Width) x D (Depth) mm		DYNAMax Series Free Standing Server Cabinets W (Width) x D (Depth) mm		NETBox Series Wall Mounting Cabinets W (Width) x D (Depth) mm		19" NETBox Series SOHO Cabinets W (Width) x D (Depth) mm		10" NETBox Series SOHO Cabinets W (Width) x D (Depth) mm		19" NETBox Home Series Cabinets W (Width) x D (Depth) mm		NETBox Slim Series Cabinets W (Width) x D (Depth) mm		DYNAlFrame Frame Systems W 530 x D (Depth) mm								
Part Number* and Product Description	Product Dimensions mm	Pack Dimensions mm	Product Net Weight kg	Product Gross Weight kg	QTY in Box pcs	Box Dimensions mm	Box Gross Weight kg	600x600	600x800	600x1000	800x600	800x800	800x1000	600x1000	800x1000	600x450	600x600	600x450+150	540x300	540x400	312x300	600x150	600x300	522x480	Single Frame with 80mm depth	Double Frame System with 80mm depth	Double Frame System with 160mm depth	Single Frame with 160mm depth	
LN-RAF-SBT-D600-CC-UNV Fixed Shelf, 19" 1U Metal Bracket, 4 point fixing, Physical Shelf Depth:370mm for D=600mm cabinets, Load Capacity 50 kg Universal Model, Compatible with any brand cabinet	486x370x44	510x390x43	2	2,4	10	550x430x480	26	●			●							**								●			
LN-RAF-SBT-D800-CC-UNV Fixed Shelf, 19" 1U Metal Bracket, 4 point fixing, Physical Shelf Depth:570mm for D=800mm cabinets, Load Capacity 50 kg Universal Model, Compatible with any brand cabinet	486x570x44	490x610x43	3	3,4	10	550x450x630	36		●			●															●		
LN-RAF-SBT-D100-CC-UNV Fixed Shelf, 19" 1U Metal Bracket, 4 point fixing, Physical Shelf Depth:770mm for D=1000mm cabinets, Load Capacity 50 kg Universal Model, Compatible with any brand cabinet	486x770x44	500x795x37	3,6	4	10	550x440x800	43		●			●	●	●														●	

* CC= Color Code, LG Light Grey RAL 7035, BL Black RAL 9005, customers to define while ordering. ** Please order set of 19" equipment mounting rails.

ACCESSORIES

SLIDING SHELVES - SUPPORT RAILS



Sliding Shelves, 4 point fixing, Compatible with all brand cabinets Multivendor. Adjustable brackets at depth. For allowing the convection of heated air inside cabinets, the shelves are structured with ventilation slots. Supply is in RAL 9005 Black and RAL 7035 Light Grey colors. From Steel Material, with high technology bending strengthening accessory, Load capacity 30 kg.

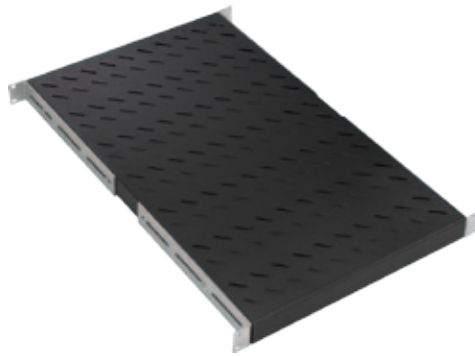
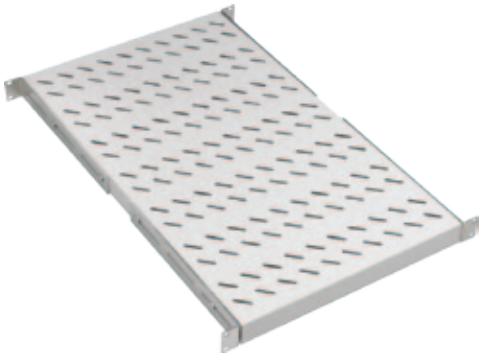
SLIDING SHELVES 4 POINT FIXING, MULTIVENDOR, compatible with any brand cabinet	Logistics Data						COMPATIBLE WITH																						
							DYNAMIC Series Free Standing Cabinets W (Width) x D (Depth) mm		DYNAMAX Series Free Standing Server Cabinets W (Width) x D (Depth) mm		NETBox Series Wall Mounting Cabinets W (Width) x D (Depth) mm		19" NETBox Series SOHO Cabinets W (Width) x D (Depth) mm		10" NETBox Series SOHO Cabinets W (Width) x D (Depth) mm		19" NETBox Home Series Cabinets W (Width) x D (Depth) mm		NETBox Slim Series Cabinets W (Width) x D (Depth) mm		DYNAMIC Frame Systems W 530 x D (Depth) mm								
Part Number* and Product Description	Product Dimensions mm	Pack Dimensions mm	Product Net Weight kg	Product Gross Weight kg	QTY in Box pcs	Box Dimensions mm	Box Gross Weight kg	600x600	600x800	600x1000	800x600	800x800	800x1000	600x1000	800x1000	600x450	600x600	600x450+150	540x300	540x400	312x300	600x150	600x300	522x480	Single Frame with 80mm depth	Double Frame System with 80mm depth	Double Frame System with 80mm depth	Double Frame System with 160mm depth	
LN-RAF-HRK-D600-CC Sliding Shelf, 4 point fixing, Physical Shelf Depth:370mm for D=600mm cabinets, Load Capacity 30 kg, Compatible with any brand cabinet	486x350x44	510x390x43	2,4	2,7	10	550x430x480	30	●			●						**									●			
LN-RAF-HRK-D800-CC Sliding Shelf, 4 point fixing, Physical Shelf Depth:570mm for D=800mm cabinets, Load Capacity 30 kg, Compatible with any brand cabinet	486x550x44	490x610x43	3,3	3,6	10	550x450x630	38	●			●																●		

* CC= Color Code, LG Light Grey RAL 7035, BL Black RAL 9005, customers to define while ordering. ** Please order set of 19" equipment mounting rails.



L shaped Support Rails connecting the front and rear 19" rails, Rack mount equipments, shelves or equipments without 19" assembly brackets safely could be housed inside the cabinet with the accessory. Corrosion resistance gained by 8-12 micron zinc plating. Load Capacity 100 kg.

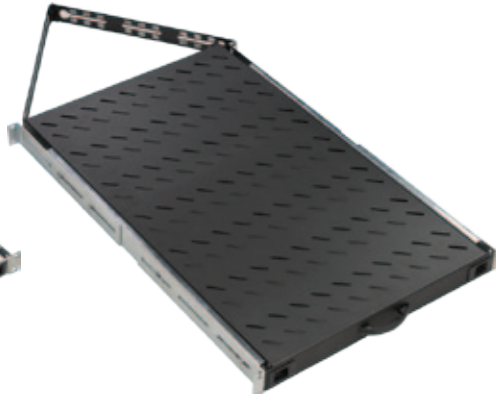
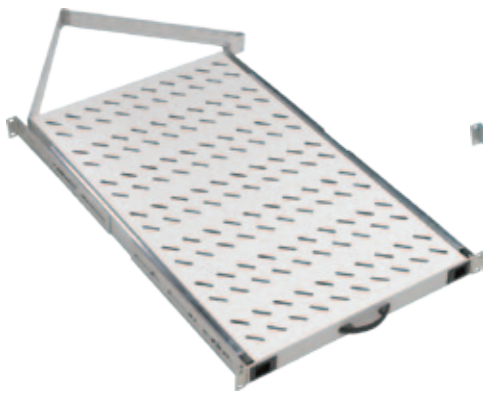
L SUPPORT RAILS	Logistics Data						COMPATIBLE WITH																						
							DYNAMIC Series Free Standing Cabinets W (Width) x D (Depth) mm		DYNAMAX Series Free Standing Server Cabinets W (Width) x D (Depth) mm		NETBox Series Wall Mounting Cabinets W (Width) x D (Depth) mm		19" NETBox Series SOHO Cabinets W (Width) x D (Depth) mm		10" NETBox Series SOHO Cabinets W (Width) x D (Depth) mm		19" NETBox Home Series Cabinets W (Width) x D (Depth) mm		NETBox Slim Series Cabinets W (Width) x D (Depth) mm		DYNAMIC Frame Systems W 530 x D (Depth) mm								
Part Number and Product Description	Product Dimensions mm	Pack Dimensions mm	Product Net Weight kg	Product Gross Weight kg	QTY in Box pcs	Box Dimensions mm	Box Gross Weight kg	600x600	600x800	600x1000	800x600	800x800	800x1000	600x1000	800x1000	600x450	600x600	600x450+150	540x300	540x400	312x300	600x150	600x300	522x480	Single Frame with 80mm depth	Double Frame System with 80mm depth	Double Frame System with 80mm depth	Double Frame System with 160mm depth	
LN-RAF-RAY-D600-ZN L support Rail for D=600mm cabinets, zinc plated 8-12 micron, Physical L support Rail Depth:350mm	44x350x44	55x400x55	0,8	1,1	1	55x400x55	1,1	●			●																		
LN-RAF-RAY-D800-ZN L support Rail for D=800mm cabinets, zinc plated 8-12 micron, Physical L support Rail Depth:570mm	44x570x44	55x610x55	1,3	1,6	1	55x610x55	1,6	●			●																		
LN-RAF-RAY-D100-ZN L support Rail for D=1000mm cabinets, zinc plated 8-12 micron, Physical L support Rail Depth:720mm	44x720x44	55x750x55	1,6	2	1	55x750x55	2		●			●	●	●															



Heavy Duty Fixed Shelves, 4 point fixing, Compatible with all brand cabinets. Multivendor. For allowing the convection of heated air inside cabinets, the shelves are structured with ventilation slots. 1U sized. Adjustable brackets at depth. With this feature the item can be assembled to any brand cabinet. Supply is in RAL 9005 Black and RAL 7035 Light Grey colors. From Steel Material, with high technology bending strengthening accessory, Load capacity 100 kg.

FIXED SHELVES 4 POINT FIXING, HEAVY DUTY TYPE	Logistics Data							COMPATIBLE WITH																					
								DYNAMIC Series Free Standing Cabinets W (Width) x D (Depth) mm	DYNAMax Series Free Standing Server Cabinets W (Width) x D (Depth) mm	NETBox Series Wall Mounting Cabinets W (Width) x D (Depth) mm	19" NE TBox Series SOHO Cabinets W (Width) x D (Depth) mm	10" NE TBox Series SOHO Cabinets W (Width) x D (Depth) mm	19" NE TBox Home Series Cabinets W (Width) x D (Depth) mm	NETBox Slim Series Cabinets W (Width) x D (Depth) mm	Single Frame with 80mm depth Frame		Double Frame System with 80mm depth Frame D:670mm		Double Frame System with 80mm depth Frame D:870mm		Double Frame System with 80mm depth Frame D:1070mm								
Part Number* and Product Description	Product Dimensions mm	Pack Dimensions mm	Product Net Weight kg	Product Gross Weight kg	QTY in Box pcs	Box Dimensions mm	Box Gross Weight kg	600x600	600x800	600x1000	800x600	800x800	800x1000	600x1000	800x1000	600x450	600x600	600x450+150	540x300	540x400	312x300	600x150	600x300	522x480	Single Frame with 80mm depth Frame	Double Frame System with 80mm depth Frame D:670mm	Double Frame System with 80mm depth Frame D:870mm	Double Frame System with 80mm depth Frame D:1070mm	Single Frame with 160mm depth Frame
LN-RAF-SBA-D100-CC Heavy Duty Fixed Shelf, 1U 19", 4 point fixing. Physical Shelf Depth:720mm for D=1000mm cabinets. Load Capacity 100 kg	486x720x44	490x750x50	4,2	4,7	8	550x440x800	41		●			●	●	●														●	

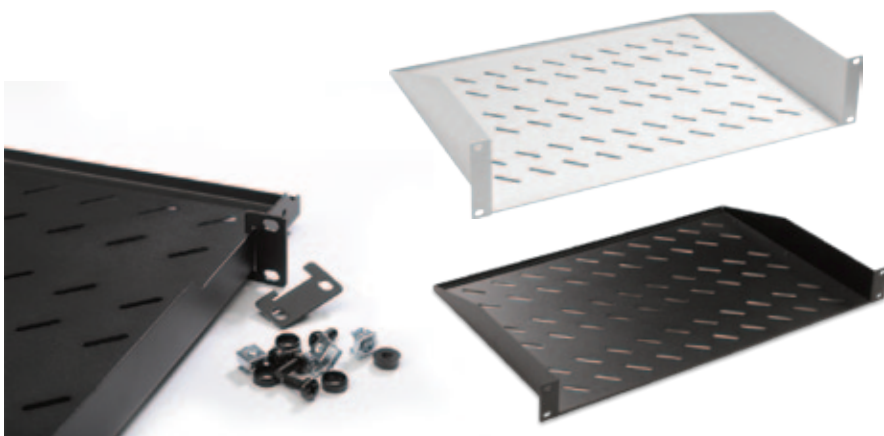
* CC= Color Code, LG Light Grey RAL 7035, BL Black RAL 9005, customers to define while ordering.



Heavy Duty Sliding Shelves, 4 point fixing, Compatible with all brand cabinets. Multivendor. For allowing the convection of heated air inside cabinets, the shelves are structured with ventilation slots. 1U sized. Adjustable brackets at depth. With this feature the item can be assembled to any brand cabinet. Supply is in RAL 9005 Black and RAL 7035 Light Grey colors. From Steel Material, with high technology bending strengthening accessory, Load capacity 50 kg.

SLIDING SHELVES 4 POINT FIXING, HEAVY DUTY TYPE	Logistics Data							COMPATIBLE WITH																					
								DYNAMIC Series Free Standing Cabinets W (Width) x D (Depth) mm	DYNAMax Series Free Standing Server Cabinets W (Width) x D (Depth) mm	NETBox Series Wall Mounting Cabinets W (Width) x D (Depth) mm	19" NE TBox Series SOHO Cabinets W (Width) x D (Depth) mm	10" NE TBox Series SOHO Cabinets W (Width) x D (Depth) mm	19" NE TBox Home Series Cabinets W (Width) x D (Depth) mm	NETBox Slim Series Cabinets W (Width) x D (Depth) mm	Single Frame with 80mm depth Frame		Double Frame System with 80mm depth Frame D:670mm		Double Frame System with 80mm depth Frame D:870mm		Double Frame System with 80mm depth Frame D:1070mm								
Part Number *and Product Description	Product Dimensions mm	Pack Dimensions mm	Product Net Weight kg	Product Gross Weight kg	QTY in Box pcs	Box Dimensions mm	Box Gross Weight kg	600x600	600x800	600x1000	800x600	800x800	800x1000	600x1000	800x1000	600x450	600x600	600x450+150	540x300	540x400	312x300	600x150	600x300	522x480	Single Frame with 80mm depth Frame	Double Frame System with 80mm depth Frame D:670mm	Double Frame System with 80mm depth Frame D:870mm	Double Frame System with 80mm depth Frame D:1070mm	Single Frame with 160mm depth Frame
LN-RAF-HRA-D100-CC Heavy Duty Sliding Shelf, 1U 19", 4 point fixing. Physical Shelf Depth:720mm for D=1000mm cabinets. Load Capacity 50 kg, full telescopic	486x720x44	490x750x50	6,1	6,7	8	550x440x800	57			●			●	●	●													●	

* CC= Color Code, LG Light Grey RAL 7035, BL Black RAL 9005, customers to define while ordering.



The assembly should be fronted to the equipment mounting rails to increase the load capacity of shelf. Supply is in RAL 9005 Black and RAL 7035 Light Grey colors. From Steel Material.

2U 19" Doubleway shelf, central assembly to the frame of frame System DYNAmes, supply is in RAL 9005 Black and RAL 7035 Light Grey colors. From Steel Material, with high technology bending strengthening accessory, Load capacity 50 kg

1U size, bracket, an accessory for assembling to rear

equipment mounting rails to increase the load capacity of shelf. Supply is in RAL 9005 Black and RAL 7035 Light Grey colors. From Steel Material.

2U 19" Doubleway shelf, central assembly to the frame of frame System DYNAmes, supply is in RAL 9005 Black and RAL 7035 Light Grey colors. From Steel Material, with high technology bending strengthening accessory, Load capacity 50 kg

RACK MOUNT SHELVES 2 POINT FIXING	Logistics Data						COMPATIBLE WITH																				
							COMPATIBLE WITH DYNAmes Series Free Standing Cabinets			DYNAmes Series Free Standing Server Cabinets			NETbox Series Wall Mounting Cabinets			19" NETbox Series SOHO Cabinets			19" NETbox Home Series Cabinets			NETbox Slim Series Cabinets			DYNAmes Frame Systems		
Part Number* and Product Description	Product Dimensions mm	Pack Dimensions mm	Product Net Weight kg	Product Gross Weight kg	QTY in Box pcs	Box Dimensions mm	600x600	600x800	600x1000	800x600	800x800	800x1000	600x1000	600x450	600x600	600x450+150	540x300	540x400	312x300	600x150	600x300	522x480	Single Frame with 80mm depth	Double Frame System with 80mm depth	Double Frame System with 80mm depth	Double Frame System with 80mm depth	Single Frame with 160mm depth
LN-RAF-RMO-1U20-CC 1U D=200mm 19" Rack Mount Shelf, 2 point fixing, for all cabinets at 19" provision, Load Capacity 30 kg	486x200x44	510x240x50	0,9	1,1	10	545x425x400	●	●	●	●	●	●	●	●	●	●	●	●			●		●	●	●	●	●
LN-RAF-RMO-1U25-CC 1U D=250mm 19" Rack Mount Shelf, 2 point fixing, for all cabinets at 19" provision, Load Capacity 30 kg	486x250x44	510x280x50	1,1	1,3	10	545x425x400	●	●	●	●	●	●	●	●	●	●	●	●					●	●	●	●	●
LN-RAF-RMO-1U30-CC 1U D=300mm 19" Rack Mount Shelf, 2 point fixing, for all cabinets at 19" provision, Load Capacity 30 kg	486x300x44	505x305x50	1,3	1,6	9	545x425x400	●	●	●	●	●	●	●	●	●	●	●	●					●	●	●	●	●
LN-RAF-RMO-1U40-CC 1U D=400mm 19" Rack Mount Shelf, 2 point fixing, for all cabinets at 19" provision, Load Capacity 30 kg	486x400x44	515x415x55	1,7	2,1	8	545x425x400	●	●	●	●	●	●	●	●	●	●	●	●					●	●	●	●	●
LN-RAF-RMO-2U35-CC 2U D=350mm 19" Rack Mount Shelf, 2 point fixing, for all cabinets at 19" provision, Load Capacity 30 kg	486x350x88	510x360x90	2,1	2,4	4	545x425x400	●	●	●	●	●	●	●		●	●							●	●	●	●	●
LN-RAF-RMO-2U55-CC 2U D=550mm 19" Rack Mount Shelf, 2 point fixing, for all cabinets at 19" provision, Load Capacity 30 kg	486x550x88	500x595x100	3,3	3,8	4	550x450x630	●	●	●	●	●	●	●										●	●	●	●	●
LN-RAF-RMO-1UXX-CC 1U 19" Adapter part, 1set:2 pcs incl the fixing hardware, Allowing rack mount shelves to attach to rear 19" rails, Increasing the original load capacity of shelf	1U	270x165x50	0,2	0,2	10	270x165x50	●	●	●	●	●	●	●											●	●	●	
LN-RAF-RMO-2U80-CC 2U D=570mm 19" Rack Mount Double way shelf, 4 point fixing, Fixed Shelf, Single Frame 80mm frame, usage at 19" provision, Load capacity 50 kg	486x570x88	683x490x90	3,8	4,2	4	550x440x800																	●				
LN-RAF-RMO-2U160-CC 2U D=570mm 19" Rack Mount Double way shelf, 4 point fixing, Fixed Shelf, Single Frame 160mm frame, usage at 19" provision, Load capacity 50 kg	486x570x88	683x490x90	4	4,5	4	550x440x800																					●

* CC= Color Code, LG Light Grey RAL 7035, BL Black RAL 9005, customers to define while ordering.



Frontal assembly to the 19" equipment mounting rails, the rear adjustable brackets allows the rear assembly to the rear 19" equipment mounting rails, providing 4 point assembly. For allowing the convection of heated air inside cabinets, the shelves are structured with ventilation slots. Supply is in RAL 9005 Black and RAL 7035 Light Grey colors. . From Steel Material, with high technology bending strengthening accessory, Load capacity 50 kg

RACK MOUNT SHELVES, 4 POINT FIXING	Logistics Data										COMPATIBLE WITH																		
											DYNAMIC Series Free Standing Cabinets W (Width) x D (Depth) mm	DYNAMIC Series Free Standing Server Cabinets W (Width) x D (Depth) mm	NE Tbox Series Wall Mounting Cabinets W (Width) x D (Depth) mm	19" NE Tbox Series SOHO Cabinets W (Width) x D (Depth) mm	10" NE Tbox Series SOHO Cabinets W (Width) x D (Depth) mm	19" NE Tbox Home Series Cabinets W (Width) x D (Depth) mm	NE Tbox Slim Series Cabinets W (Width) x D (Depth) mm	DYNAMIC Frame Systems W 530 x D (Depth) mm											
Part Number* and Product Description	Product Dimensions mm	Pack Dimensions mm	Product Net Weight kg	Product Gross Weight kg	QTY in Box pcs	Box Dimensions mm	Box Gross Weight kg	600x600	600x800	600x1000	800x600	800x800	800x1000	600x1000	800x1000	600x450	600x600	600x450+150	540x300	540x400	312x300	600x150	600x300	522x480	Single Frame with 80mm depth Frame	Double Frame System with 80mm depth Frame D:670mm	Double Frame System with 80mm depth Frame D:870mm	Double Frame System with 80mm depth Frame D:1070mm	Single Frame with 160mm depth Frame
LN-RAF-RMC-1135-CC 1U 19" frontal, 1 U 19" rear assembly, adjustable rear 19" brackets, D=350mm , for all cabinets at 19" provision, Load Capacity 50 kg	486x350x44	510x410x55	2,2	2,6	7	550x430x480	20,3	●	●	●	●	●	●	●	●											●	●		
LN-RAF-RMC-2135-CC 2U 19" frontal, 1 U 19" rear assembly, adjustable rear 19" brackets, D=350mm , for all cabinets at 19" provision, Load Capacity 50 kg	486x350x88	510x360x100	2,1	2,4	4	545x425x400	11,5	●	●	●	●	●	●	●	●											●	●		
LN-RAF-RMC-1145-CC 1U 19" frontal, 1 U 19" rear assembly, adjustable rear 19" brackets, D=450mm , for all cabinets at 19" provision, Load Capacity 50 kg	486x450x44	558x475x57	2,4	2,7	7	550x450x630	21	●	●	●	●	●	●	●	●											●	●	●	
LN-RAF-RMC-2145-CC 2U 19" frontal, 1 U 19" rear assembly, adjustable rear 19" brackets, D=450mm , for all cabinets at 19" provision, Load Capacity 50 kg	486x450x88	595x500x100	2,7	3,1	4	550x450x630	14,5	●	●	●	●	●	●	●	●											●	●	●	
LN-RAF-RMC-2155-CC 2U 19" frontal, 1 U 19" rear assembly, adjustable rear 19" brackets, D=550mm , for all cabinets at 19" provision, Load Capacity 50 kg	486x550x88	595x500x100	3,3	3,7	4	550x450x630	17		●				●	●	●													●	
LN-RAF-RMC-2165-CC 2U 19" frontal, 1 U 19" rear assembly, adjustable rear 19" brackets, D=650mm , for all cabinets at 19" provision, Load Capacity 50 kg	486x650x88	683x490x90	3,5	4	4	550x440x800	18,5		●				●	●	●													●	
LN-RAF-RMO-1UXX-CC 1U 19" Adapter part, 1set:2 pcs incl the fixing hardware, Allowing rack mount shelves to attach to rear 19" rails, Increasing the original load capacity of shelf	1U 270x165x50		0,2	0,2	10		2,4	●	●	●	●	●	●	●	●											●	●	●	

* CC= Color Code, LG Light Grey RAL 7035, BL Black RAL 9005, customers to define while ordering. ** Please order set of 19" equipment mounting rails.